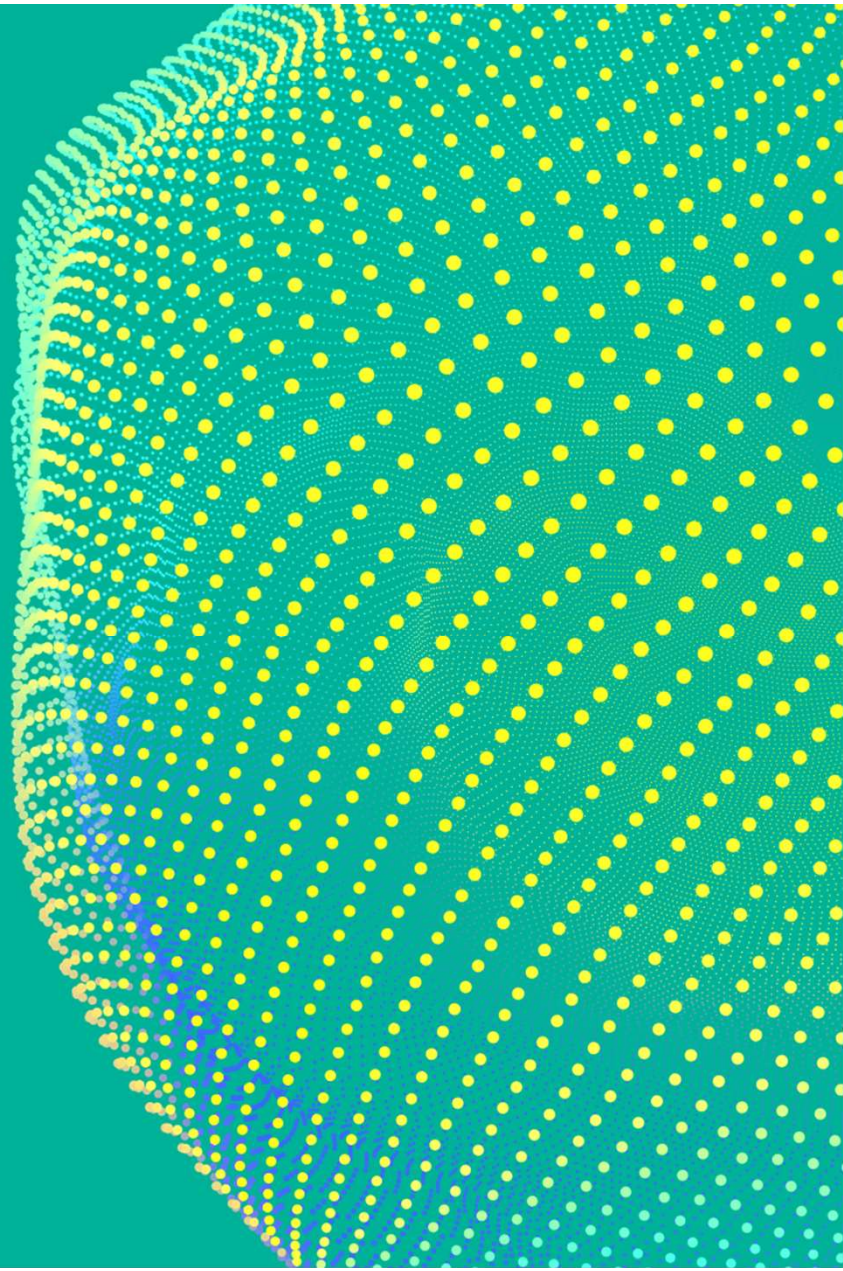




# Patent Prosecution with AI: Opportunities and Challenges

Dr Daniel Chew  
Partner, Head of Asia Group HLK, President of The  
Chartered Institute of Patent Attorneys



# Why AI in Patent Prosecution?

- Economic conditions, budget constraints
- AI advancements
- Client expectations and benefits
- Focus on efficiency, cost savings, and client satisfaction
- Potential to free up support staffs from repetitive manual work
- Potential to free up patent practitioners to do more strategic work

# Addressing Client Expectations

- Importance of transparency in AI utilisation
- Client expectations and preferences on the use of AI tools
- Rules of professional conduct

# Realistic Understanding of AI Capabilities

- What can AI really(?) to do for us?
  - Draft patent applications in 5 minutes! WOW!
  - Prepare responses to OA in 3 minutes! AMAZING!
  - Prepare an advisory note to a client in 1 minute! LOVE IT!

# AI in Patent Prosecution (1)

- Automation and Routine tasks
  - Automate laborious manual tasks
  - Fetch data from relevant database
  - Identify sections in related art cited by Examiners
  - Look up parallel patent applications in other jurisdictions
  - Provide a structural framework for response

# AI in Patent Prosecution (2)

- Intelligent tasks:
  - Perform claim features analysis and assist in claims explanation
  - Interrogate prior art against a claim
  - Compare a patent claim with prior art passages – identify what's relevant and what's not
  - Write a novelty argument

# Other Uses

- Prior Art search – currently offered by many service providers
- FTO Analysis
  - Accelerating early-stage assessment
  - Traffic light analysis
  - Initial risk identification

# Limitations

- Inaccuracy in identifying specific features
- Lacks the subjectivity and contextual understanding
- Inventive step – for example: Problem and Solution approach
- Combining teachings of multiple documents
- Lacks the legal and technical expertise of a patent attorney
- Unable to perform strategic tasks
- Output depends on input



# Can AI Replace Us?

- Depends...
- Cannot prevent the arrival of AI
- Patent practitioners need to be aware (and have an understanding) of how AI can help and deploy in their workflow
- Need to adapt and work with AI tools, otherwise we will be replaced
- Human and AI interactions
  - Train AI tools to perform specific task to improve performance and trust
- Need measures that control and manage the risks associated with AI systems

# Can AI Replace Us?

- Successful integration of AI requires a concerted effort in training and educating legal professionals, including trainees and paralegals
- Need to understand the capabilities and limitations
- General reluctance to deploy due to concerns about liability risk, reliability and client confidentiality
- Requires more certainty on regulating AI implementations

# Thank you for listening

For further enquiries, please contact me  
at [dchew@hik-ip.com](mailto:dchew@hik-ip.com)

Keep up-to-date with the latest IP  
insights and updates via HLK's social  
media:

